

Delcam
PartMaker



welcome to Delcam

Delcam is the world's leading developer of advanced CAD/CAM software solutions for manufacturing industry.

PartMaker is developed by Delcam's PartMaker Inc. subsidiary, based in the United States just outside Philadelphia. PartMaker Inc. was acquired by Delcam plc in July 2006. PartMaker Inc.'s mission is to help manufacturers create and validate CNC programs more easily by providing a cost effective CAD/CAM system that immediately makes the programming of CNC Mills, Lathes, Wire EDMs, Turn-Mill Centers and Swiss-type lathes more productive. For more than a decade, PartMaker has pioneered the market in multi-axis, multi-spindle CAM software.



- Future
- World Leading CAD/CAM Supplier
- 20,000 Customers
- Acquire CRISPIN
Acquire IMCS (PartMaker)
Acquire EGS (FeatureCAM)
- Patented programming of simultaneous and synchronous machining
- PartMaker WireEDM
- Patented programming of multi-axis lathes with live tooling
- PartMaker SwissCAM
- 00's
- 3 Queens Awards (for Innovation and Export)
- PartMaker Turn-Mill
- PartMaker Turn
- Delcam Flotation
- PartMaker Mill
- IMCS Inc. founded
- 90's
- Management Buyout
- 80's
- External Sales Begin
- Division of Delta Metals
- 70's
- Cambridge University

what can PartMaker do for you?

PartMaker SwissCAM

PartMaker SwissCAM is a patented system that defies comparison in automating the programming of Multi-Axis, Sliding Headstock Swiss-type lathes. PartMaker SwissCAM has an intuitive visual approach to speed up the programming of the complete range of parts you might make on a Swiss-type lathe, from the most basic turned part to the most complex component with a number of turned and milled features.

PartMaker Turn and Turn-Mill

PartMaker Turn and Turn-Mill modules apply a Patented Knowledge Based Machining approach to automate the programming of machines ranging from the simplest 2-axis lathes, to more complex lathes with live tooling to multi-tasking machining centers equipped with multiple turrets and articulating B-axis milling heads. The PartMaker Turn-Mill module uses a Patented Visual Programming Approach to simplify the programming process.

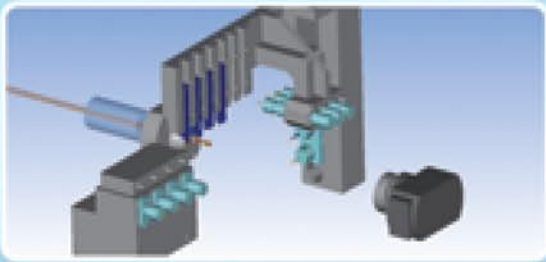


PartMaker Mill

PartMaker Mill gives you what you really need from a CAM system – the ease of use to program your parts quickly with the power and flexibility to handle even the toughest jobs. PartMaker Mill excels at automating milling operations from one-off prototypes to production milling applications such as multi-vice setups and horizontal tombstone machining.

PartMaker WireEDM

PartMaker Wire EDM is an intuitive yet powerful solution for programming your Wire EDM. PartMaker Wire EDM supports 2-axis, 2-axis with taper and full four axis Wire cutting strategies.



PartMaker SwissCAM lets you program virtually any sliding headstock Swiss-type lathe, faster and more easily than ever before. The software's Patented Divide and Conquer programming approach lets you break a part with a number of turned and milled features into a series of much simpler operations.

With PartMaker SwissCAM's patented Visual Synchronization approach, you can automatically synchronize multiple tool posts and spindles to achieve the most efficient cycle time for your particular machine. The software generates all "wait" and "sync" codes and places them in the correct location in the NC code.

PartMaker calculates a cycle time for each operation on a part. A graphical time chart displays a total part cycle time taking into account the synchronization strategy used on a part so you can see how much cycle time is being saved. Here you can perform "what if" scenarios based on your machines' capabilities to reduce cycle time even further.

PartMaker allows you to simulate the cutting of your part in a visual 3D simulation. The 3D simulation assures you that your part will be machined correctly and without any costly tool collisions.

PartMaker supports the programming of virtually every CNC Swiss-type lathe ever built. PartMaker SwissCAM post processors are specially developed for each Swiss machine based on their unique architectures and programming requirements, assuring you that the software generates accurate NC code.

Compatibility:

PartMaker SwissCAM supports Swiss-type lathes from:

- Citizen
- Star
- Tsugami
- Tornos
- Hanwha
- Ganesh
- Gildemeister
- Maier
- NexTurn
- Nomura
- Po Ly Gim
- Traub
- ...and others

do you need to reduce programming and setup time?

PartMaker SwissCAM allows you to slash both machine set-up times and programming times on your Swiss-type lathes by allowing you to create and validate CNC programs off-line at a PC before sending them to the machine. PartMaker SwissCAM is a patented system that defies comparison in automating the programming of Multi-Axis, Sliding Headstock Swiss-type lathes. The software employs a Patented, powerful yet easy to use visual approach for programming these complex machines, resulting in a significant savings of both time and money. Many PartMaker SwissCAM users report reducing machine set-up times for new jobs by over 50% compared with their previous programming methods, in addition to massive savings in programming time.

"The main feature that sold us on PartMaker was its ability to program Swiss-type lathes. If you're buying new machines that reduce cycle time, why keep your part programming in the dark ages?"

Mark Peniska

Manufacturing Engineer

Isco Inc.



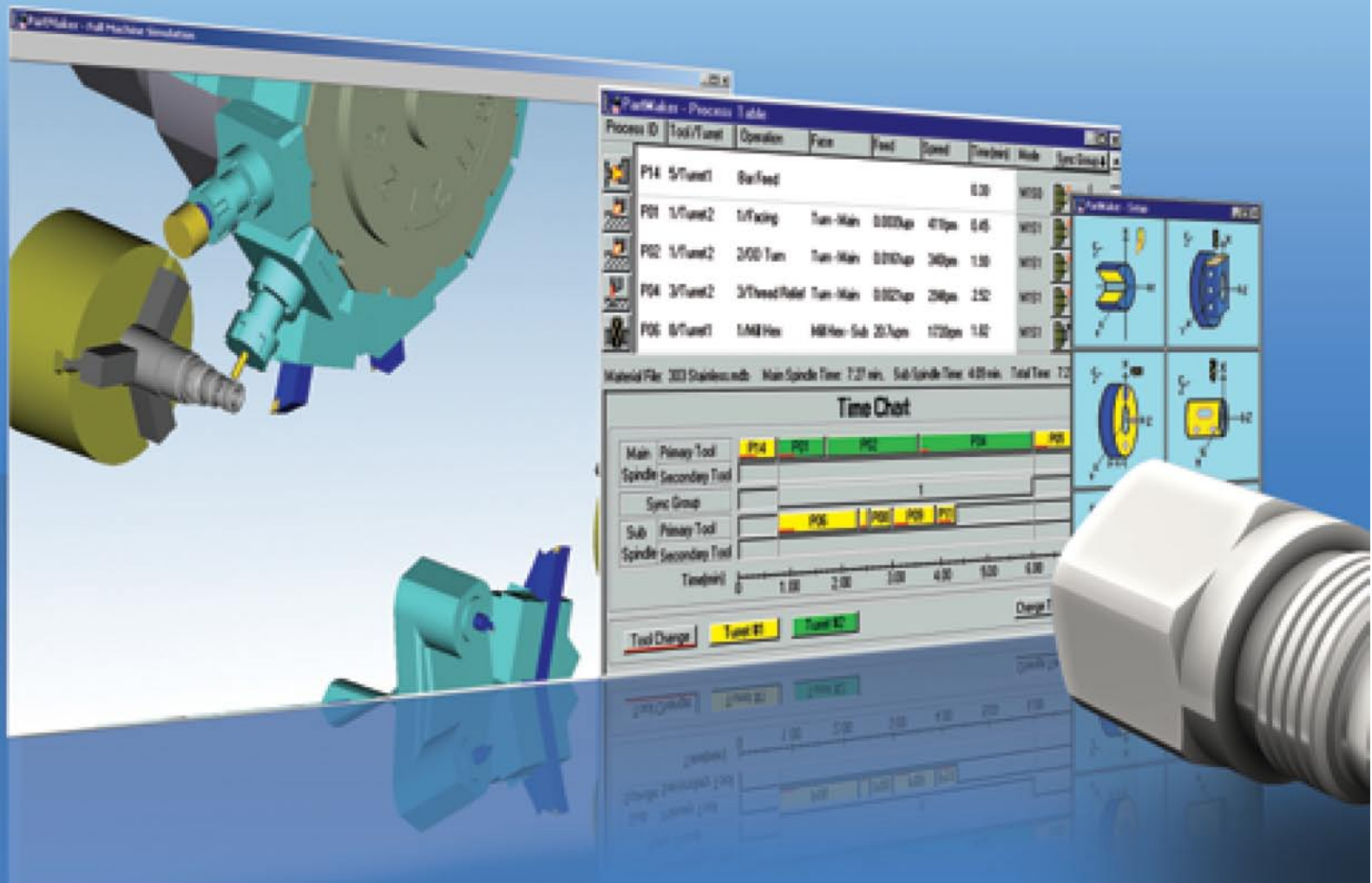
Delcam
PartMaker
SwissCAM



are you looking to get more multi

"We weren't able to get a complete program from our existing CAM package. It wasn't sophisticated enough to handle our new-age machines. PartMaker has solved that problem, and just as the new machines are enabling us to produce more and more complex parts in less time, our new software is enabling us to program those parts in less time."

*Michael Tamasi
President
Boston Centerless - Accurounds*



Are you out of your 5-axis lathes?

Your shop has invested in multi-tasking Turn-Mill Centers to machine complete parts in a single set-up, reduce cycle time and increase precision. PartMaker Turn-Mill allows you to take the next step in productivity. The software lets you program and simulate the machining of your Turn-Mill parts off-line at your computer. By generating edit-free CNC programs and proving out the results on screen with PartMaker you will reduce programming and set up time resulting in a measurable savings of time and money!

PartMaker's Patented Visual Programming approach makes it easier to program parts with a number of turned and milled features. For machines with multiple turrets and/or multiple spindles, PartMaker's Patented Visual Synchronization technology allows you to synchronize simultaneous machining operations automatically. The software displays a time chart, showing a time for each operation and a total cycle time, including any overlapping operations. Once a part is programmed, you can perform a 3D machining simulation to ensure your part will run without any errors or collisions.

PartMaker supports the programming of virtually every Turn-Mill machine on the market. PartMaker Turn-Mill post processors have been developed for each multi-axis lathe based on the machine's specific architecture and machine control, assuring you that the software will generate accurate NC code for your machine.

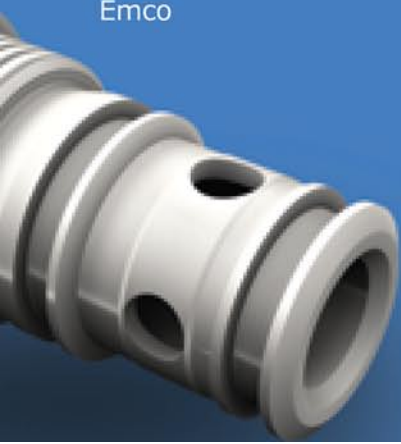
Compatibility:

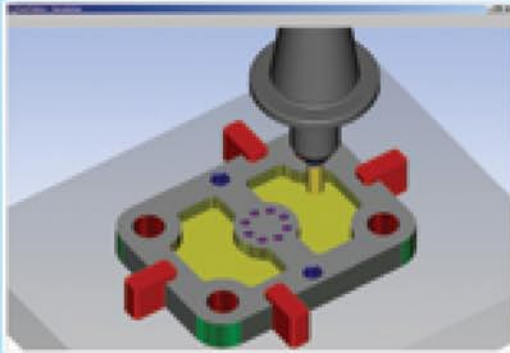
PartMaker Turn-Mill supports multi-axis lathes from:

Hardinge
Okuma
Mori-Seiki
Mazak
Miyano
Nakamura-Tome
Haas
Index
Citizen
Gildemeister
Biglia/Eurotech
Daewoo/Doosan
OmniTurn
Hwacheon
Emco Maier
Kia
Wasino
WFL
Emco

PartMaker Turn

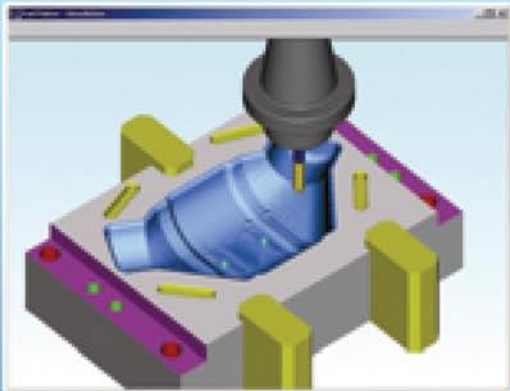
PartMaker Turn is a cost effective and easy to-use system to automate the programming of the full range of machining operations for 2-axis CNC lathes. The software supports turning operations including OD and ID roughing, finishing, contouring, grooving, threading and holemaking. Users can output in either long-hand G-code or canned cycle format. PartMaker Turn is included with PartMaker Turn-Mill or can be purchased on a standalone basis for users who do not have lathes with live tooling.





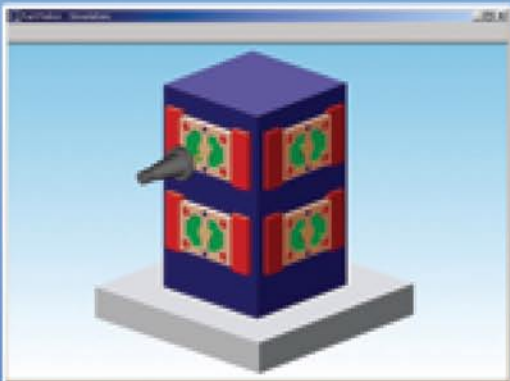
2 ½ Axis Milling

PartMaker Mill's 2 ½ Axis Milling module automates hole making operations such as drilling, tapping, reaming and thread milling by determining hole depth automatically. It calculates tool paths for contouring and pocketing with any number of islands. PartMaker Mill uses a unique Windows-based approach to automate multi-piece setups and multi-sided milling.



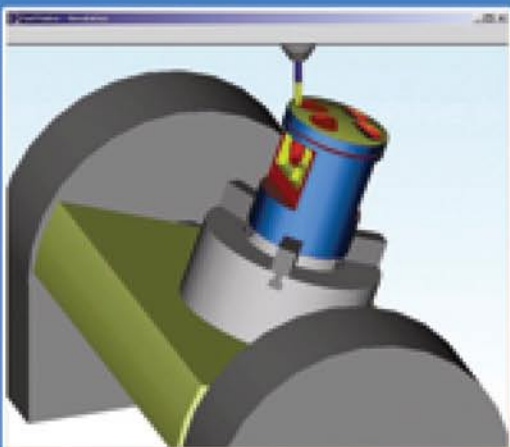
3D Surface Machining

PartMaker's powerful 3D Surface Machining Wizard (SMW) allows the user to easily machine complex 3D surfaces with a variety of machining strategies including Roughing, Finishing, Remachining and Tool Path Projection. PartMaker's SMW software employs powerful algorithms that measurably cut down the time required for manufacturing parts. The SMW module automates the programming of 3D surface machining operations making it very easy to use.



Production Milling Module – For Horizontal Machining Centers and 4th and 5th Axis Rotary Attachments

PartMaker's Production Milling Module (PMM) allows the user to better visualize machining on horizontal machining centers with tombstone fixtures. The user can optimize the use of tombstones for machining multiple parts or a number of sides of the same part. The PartMaker PMM also supports the programming and simulation of vertical machining centers equipped with 4-axis and 5-axis rotary tables. PartMaker's intuitive "Divide and Conquer" approach simplifies machining in multiple planes.



5th Axis Prismatic Milling

PartMaker's 5th Axis Prismatic Milling module automates the programming of features in arbitrary planes using inclined tooling attachments, 5th axis rotary fixtures and tilting tables.

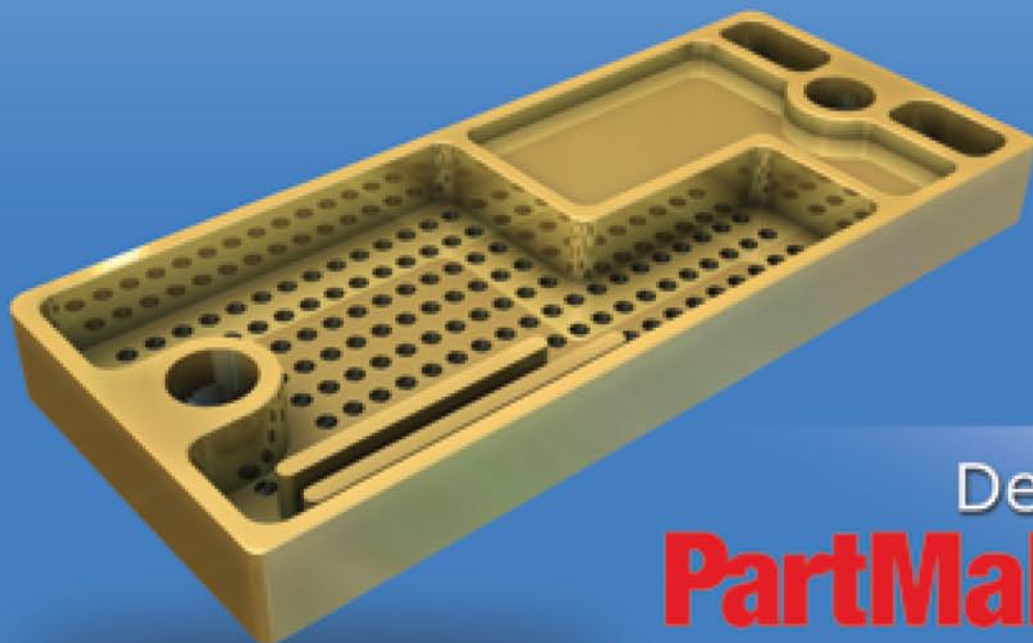
are you **looking for** **power** and **ease of use?**

PartMaker Mill gives you what you really need from a CAM system – the ease of use to program your parts quickly with the power and flexibility to handle even the toughest jobs. PartMaker applies a Knowledge Based Machining approach to capture your shop-specific knowledge about feeds and speeds, tooling and repetitive processes to speed programming. This approach allows the software to calculate and display a cycle time for each job. PartMaker's Windows developed user interface has easy-to-follow graphics to guide you through every step of programming a part. PartMaker's Visual Programming Approach makes the software quicker to learn and easier to use. By generating edit-free CNC programs the first time and proving out the results on screen with PartMaker you will reduce programming and set-up time resulting in a significant savings of time and money!

"We did more with PartMaker Mill in one afternoon than we did with our previous CAM system in 10 years."

Steve Barrows

Precision Metal Machining Inc.



Delcam
PartMaker
MILL

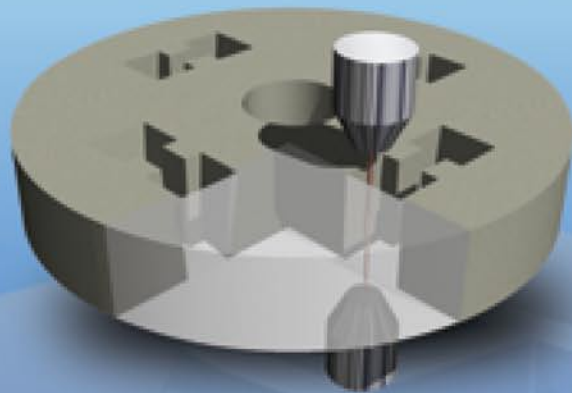


are you looking for a complete programming solution?

PartMaker's Wire EDM module automates the programming of parts with 2-axis, tapered and 4-axis features. The software allows you to program multiple skim cuts with alternate direction for each pass. It supports the programming of cut direction, glue stops and path overlaps.

For tapered cutting, PartMaker Wire EDM lets you specify varying tapers for different sections of the part and adjust land size with ease.

PartMaker Wire EDM performs full 4-axis XYUV contouring operations. The software synchronizes wire cutting on upper and lower curves with ease while allowing the user to adjust the distance between curves at any time.



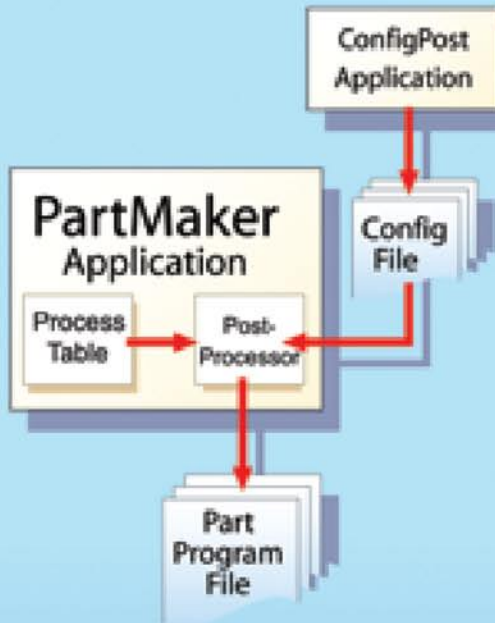
"PartMaker's Wire EDM module provides an intuitive and powerful programming tool for automating the programming of our wire machine."

Jeff Moyer

Springs Windows Fashions

Delcam
PartMaker
WireEDM





Tailor Your CNC Code to Eliminate Editing with ConfigPost!

Every PartMaker module comes standard with the ability to modify post processor output to your exact taste. PartMaker employs the unique "Config-By-Click" technology to allow you to make changes to your NC code format quickly and easily within minutes. With PartMaker's "Config-By-Click" technology you just click on the section of your NC program that you want to see changed, and the software puts you right in the spot in your post processor where you need to make the change.

The ConfigPost application lets you:

- Tailor NC output to meet your company's unique requirements with the click of a button
- Develop new post processors yourself
- Improve documentation by automatically inserting comments throughout the NC code

Geometry Creation and Import

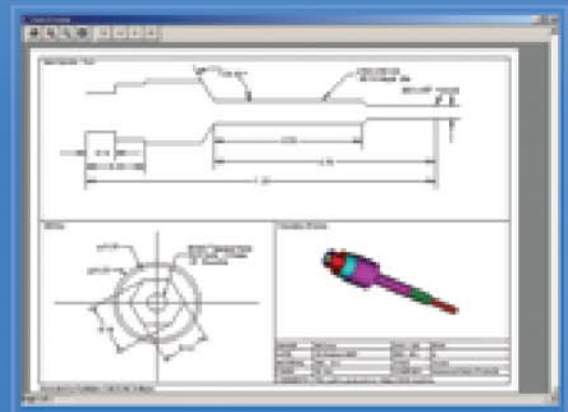
PartMaker's integrated CAD module makes it easier to create part drawings using points, lines, arcs, chamfers and fillets with a user interface specifically designed for machinists to reduce data input time. Once created, geometry can be exported via a bi-directional DXF interface.

PartMaker also allows you to import both 2D geometric data and 3D solid models from virtually any CAD or engineering system including SolidWorks, AutoCAD, Pro/E, Unigraphics and others. Once a solid is imported, PartMaker detects all machinable edges and surfaces allowing you to easily apply tool paths to the geometry and quickly generate an NC program.



Drafting and Documentation

Whether you are drawing your part inside of PartMaker's CAD module or importing your geometry from another CAD system, PartMaker will allow you to quickly create dimensioned drawings. Using the PartMaker Documentation Wizard module, you can create highly professional process documentation on your parts with just a few mouse clicks. The Documentation Wizard harnesses the work you've already done in PartMaker automatically to output attractive, user configurable documentation that clearly illustrates what you are trying to achieve on a given part. This professional looking documentation can be used for shop floor documentation or to present to customers or potential clients.



System Requirements

PartMaker runs optimally on virtually any Windows XP or Vista based PC. Specific system requirements are: Windows XP or Windows Vista, Pentium 3 - 800 Mhz processor, 512 MB of RAM, 1 GB of Free Hard Disk Space, 20 GB Hard Drive, 128 MB Independent Video Card



**Small Heath Business Park,
Birmingham,
B10 0HJ
UK
Tel: +44 (0)121 766 5544
Fax: +44 (0)121 766 5511
www.delcam.com
marketing@delcam.com**

**540 Pennsylvania Ave.,
Suite 315
Fort Washington,
PA 19034
USA
Tel: +1 215 643 5077
Fax: +1 215 653 0105
www.partmaker.com
info@partmaker.com**