



## Stock Supervisor Solution

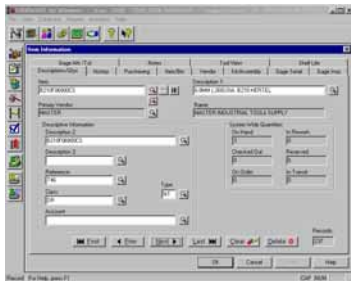
Applied CIM Technologies, Inc. has a wide selection of proven crib management products that have been successfully implemented around the world. These solutions have streamlined the inventory management and acquisition processes, while reducing overall operating expenses.

### Lista e-Lock Storage



- An electronic locking system to limit access to stored materials
- Cabinet models available for controlling tools, supplies, MRO, gloves, welding supplies, gages, hand tools
- Quick to setup; easy to operate and understand
- CRIBWARE controls both open stores and remote satellite cabinets for combined usage tracking, purchasing and management reporting
- Ruggedized for harsh environments, secure, economical storage

### CRIBWARE®



- Replenishment, usage tracking, consumption accountability and total location control
- Item definition standardization, inventory control, and instant information access
- Minimum and maximum inventory monitoring, replenishment notification, automated purchase order creation, and order fulfillment review
- Manages general stores, controls tool rooms, organizes maintenance cribs, optimizes gage labs and supports manufacturing cells
- Multi level kit control and shelf life material management and monitoring
- More than 250 comprehensive management reports

### Bar Code Systems



- Batch and wireless (RF) data collection devices
- Quick and easy bar code label printing
- Systematic implementation with faster, accurate information entry
- Reduced user training/greater employee acceptance

### Services that Ensure Success

- Pre-sale analysis that selects the proper technology and the most cost effective solution
- Cost justification assistance to assure long term customer satisfaction
- Customer database conversion for quick implementation
- Onsite and/or classroom training to ensure correct customer operation
- System support with telephone, email communication and remote monitoring
- Software updates and upgrades using the latest technology

## Stock Supervisor

CRIBWARE® Stock Supervisor provides secure and easy access to material stored in Lista cabinets. Utilizing the Lista e-Lock mechanism, the cabinet is unlocked using password control, and automatically re-locks to restrict access. The user quickly scans the items to be removed using a bar code reader, and the CRIBWARE software tracks the material usage, reordering when the stock runs low.

Standard Lista cabinets are available in various heights and drawer configurations to meet unique storage demands and are designed to save space and permit efficient material organization.

### Features

- Cabinet entry requires a password and is tracked by the CRIBWARE software.
- High density SKU storage in standard cabinets.
- Cabinets unlock for item issuing, returning, receiving, restocking and transferring, and re-lock at the completion of the activity.
- Sentinel controls up to ten cabinets with one master station.
- Existing Lista cabinets may be retrofitted with e-Lock controls.
- Emergency unlock is available.
- Cabinets available in various heights and drawer configurations, with customizable drawer compartments.
- Very flexible storage configurations, almost any item may be stored.



### Benefits



- Easy to implement. Easy to learn. Easy to use.
- Reduce shrinkage and increase security.
- Decentralized item control for use on the plant floor in restricted access cabinets.
- Utilize bar code technology to improve accuracy, efficiency, and user acceptance.
- Items are secure until needed and are managed by the CRIBWARE system, providing multi-level security and dynamic reporting.
- Items may be stored and organized at the work center where they are needed.
- Reduce inventory levels while improving inventory accuracy and accountability.
- Automatic reorder and inventory level management.
- Standard, durable cabinetry with flexible item storage.

## Stock Supervisor Operations

### Self Check Out/Check In

- Ease of item selection- the user sees and can touch the actual item.
- Fast issuing- one bar code scan equals quantity one, two scans equals quantity two.
- Accurate, data collection- the bar code scanner doesn't make mistakes.
- Quick returns- simply scan the bar code label.
- Accurate search- the user selects by sight and feel, not by a part number.
- Fragile item control and handling- the item does not drop or require repackaging; the user handles the item directly.



### Bar Coding

**CRIBWARE bar code technology offers simple, accurate and cost effective data collection solutions.**

- **Bar Code Label Printing**  
Easy one-step printing, labels may be printed on demand.
- **Bar Code Readers**  
Wedge Readers (corded and cordless RF scanners) for economical label scanning.

### More Than Secure Storage

CRIBWARE is an easy to use, powerful and cost efficient solution to the management of supplies, tools and indirect materials. The system is modular and very economically priced.

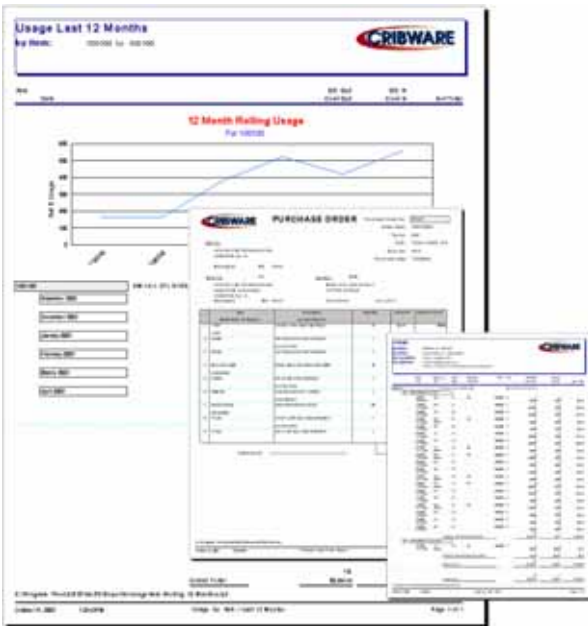
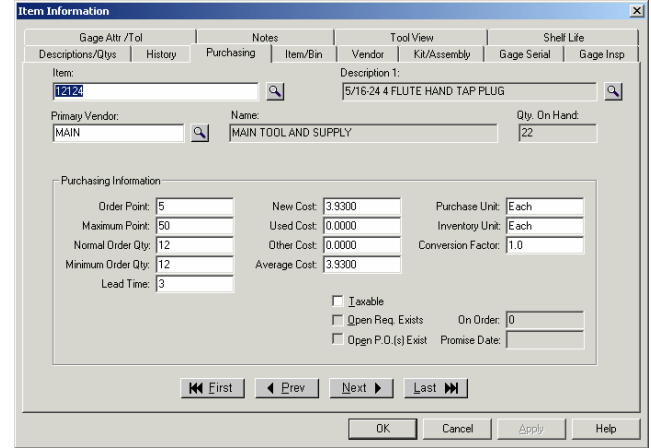
- **Item Identification and Classification**  
Easily setup and classify material. Organize the workstation for optimal efficiency.
- **Usage, Cost and Location Tracking**  
Flexible tracking parameters assure the right monitoring for your organization.
- **Inventory Control**  
Always have the item on hand, but minimize inventory.
- **Purchasing and Receiving**  
Automatically replenish and document receipts.
- **List e-lock Cabinet Access**  
Control who unlocks the cabinet(s) and track access.
- **Item Issuing/Returning**  
Use CRIBWARE to track perishable and durable material. Very large items may be stored and controlled external to the cabinet(s).
- **Management Reporting**  
Online and hardcopy reporting with over 300 standard reports.
- **Security**  
Limit access to cabinets and software functions.

# Stock Supervisor Options

## Optional CRIBWARE Software Capability

The CRIBWARE system is modular and scalable-buy only what is needed now!

- Kitting and Assembly Control**  
 The kitting module provides grouping of items for easier and faster control.
- Regrind/Rework Control**  
 Manage the regrind/rework process. Know where your regrinds are.
- Scrap Control**  
 Maintain accurate records of scrapped material.
- Maintenance Management**  
 Asset management, work order scheduling and service tracking activities.
- Courier**  
 Schedule reports for running and email delivery.



- Transfer Stock**  
 Use CRIBWARE to manage stock transfers.
- Shelf Life Management**  
 Manage date and lot sensitive material to assure the availability of items performing to specifications.
- Job Management**  
 Use CRIBWARE to track job costs and assure availability of tooling.
- Gage and Fixture Management**  
 The CRIBWARE Gage and Fixture Module incorporates ISO 9000 procedures to provide automatic calibration scheduling and history.
- Documents, Pictures, and Drawings**  
 ToolView is a fully integrated document-viewing module.
- EDI and Electronic Ordering**  
 Lower costs with paperless ordering.

## System Requirements

The CRIBWARE system runs on standard Pentium processors using Windows® 2000, NT, and XP operating systems, requires 128 MB RAM, an 800 x 600 color monitor, and a CD-ROM drive. A serial (RS232) port is required for each e-lock master cabinet. A printer is recommended.

Multi-user systems require a standard local area network. The CRIBWARE system provides record locking to ensure data integrity.

## **Services for Success**

---

### **Presale Analysis and Cost Justification**

The selection of the proper technology and the right configuration is the first step in a successful installation. Experienced Applied CIM Technologies personnel will assist in the pre-sale analysis and if necessary prepare a cost justification to ensure a cost-effective solution.

### **Database Conversion for Quick Implementation**

Applied CIM Technologies has the expertise and tools to convert existing legacy data into useful CRIBWARE information. This conversion process speeds up the installation process and provides for a quick implementation.

### **Training**

Training is available at your installation site, an Applied CIM Technologies facility or via the web, and will include technical instruction, set up assistance and hands-on information for daily system use.

### **Legacy Data and Installation**

Our technicians are experts in collecting, cleaning, and migrating data from legacy systems to CRIBWARE. These steps include a comprehensive data survey, preparation of a conversion and integration strategy, developing and testing data export and import processes, and data validation. Installation services may include: software installation and configuration, hardware installation and troubleshooting, secure storage configuration and product loading, as well as application training.

### **Service and Support**

To ensure ongoing success, an annual service agreement is available, providing technical support for:

- System operation questions and problems
- Crib management procedural questions
- Operating system and networking consultation
- Database procedural questions

Support is offered to our customers via telephone and email. Remote monitoring or dialup service is available for direct access to systems requiring special support or for remote training sessions with the end user. A web site also provides answers to frequently asked questions and resource documents for many common procedures.

### **Software Updates**

The Annual Service Agreement also provides updates to procedural software modules and products, ensuring that your company will be running the most current CRIBWARE software and maintaining your competitive technological edge in future years.

## Corporate Profile

### History

CRIBWARE was introduced in 1984, in an Iowa machine shop, as one of the first computer-based crib management systems to control, track and manage tools. Over the past two decades, we have integrated many new crib management concepts: kitting, automatic storage and retrieval systems, multi bin/multi location, shelf life, and document viewing. The system is modular, permitting customers to build upon and add functionality, as needed.

Today, CRIBWARE systems are managing material in a diverse group of industries: aerospace, automotive, consumer goods, contract manufacturing, defense, chemical and petroleum refineries, foundries, industrial machinery, job shops and industrial distribution. Some familiar names include General Motors, Eaton, Babcock and Wilcox, U.S. Navy, U.S. Army, Siemens, NASA, Chrysler, ExxonMobil, Ford Motor Company, Toro, Honda Corporation and Parker Hannifin.



Training assures success

We are just as proud of our installations at small and medium sized companies, and pride ourselves in fitting the solution to your specific needs.

We use state-of-the art development tools supported by excellent working relationships with industry leading vendors to ensure quality solutions and services that contribute to the success of our customers. All of our clients, large and small, enjoy our long standing reputation for incredible service and support. Our emphasis is to help you become more efficient and maintain that efficiency.

### Staff

The Applied CIM Technologies' staff brings years of practical Tool Crib Management experience, high energy and innovation to its products and services. This staff of computer system engineers, software developers, technicians and trainers, responds quickly to customer needs and the unique requirements of our industry. Applied CIM Technologies uses state-of-the art development tools and is supported by excellent working relationships with industry leading vendors, including Intermec, Symbol, Microsoft, and Cimmetry Systems.

### Commitment

Applied CIM Technologies, Inc. is committed to providing quality solutions and services that contribute to the success of its customers. Quality products, service, and support are the backbone of any long-term customer relationship. Applied CIM Technologies' systems, support, and service programs were developed and enhanced to help both small and large organizations become more efficient and maintain this efficiency over the long term.

©2008 Applied CIM Technologies, Inc. All rights reserved. The information in this document is subject to change without notice. CRIBWARE is a registered trademark of Applied CIM Technologies, Inc. All other product and company names mentioned herein may be the trademarks of their respective owners.