

## TDS

TDS units are heavy-duty, unmanned computer controlled storage and retrieval units that individually dispense parts, supplies or cutting tools directly to the user.

### Features

- Items do not drop
- Individual dispensing and returning
- Secure control with automatic reordering
- Complete inventory control and accountability
- Stocking and restocking
- Economical stocking of up to 1630 unique items
- 24 x 7 availability
- Repackaging is not required
- User-friendly color touchscreen for operator use

Items do not drop! A tray is moved to operator height and a door opens giving access to only the item requested. Items easily dispensed are hand tools, fasteners, gloves, cutting tools, MRO supplies, safety items, medical supplies, and repair parts.



Choose size and tray configuration

### Benefits

- **24 x 7, Point-of-Use Availability**  
The item is always available, where it is needed.
- **Positive Inventory Control to Reduce Stock Levels**  
Maintain control over inventory locations and have up-to-the minute information about maximum stock levels, usage history, quantities on hand, and quantities checked out.
- **Avoid Stock Outs**  
Reorder reports flag quantities falling below the set minimums and provide automatic purchasing.
- **Usage and Cost reporting Improves Accountability**  
Capture accurate usage and cost reporting by item, department, job, part, machine operation, or employee.
- **Return Items**  
Items may be returned and used again.
- **Secure Restocking**  
Multiple vendors can restock and are limited to their specific supplied items.



Point of Use operation

## CRIBWARE Controlled TDS

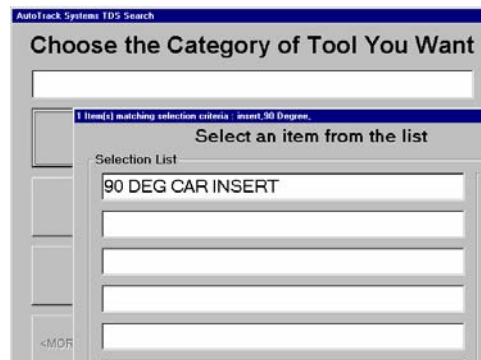
The touch screen has single task activities with large, easy to press buttons.

A user friendly, color, touch screen for access to the CRIBWARE software for inventory control, cost and usage tracking, automatic purchasing, receiving and reporting.

The TDS unit is a crib location and an integrated part of the CRIBWARE system. All TDS transactions are recorded and managed by the CRIBWARE software. Items in the TDS unit may be stored in other crib locations and managed on a system-wide basis.

### Functions

- **Check out, Check in**  
The CRIBWARE Check out (issuing) and Check in (returning) provide secure access to the stored items and a quick easy return of permanent and not used perishable items.
- **Multi-Bin Storage**  
Items may be stored in an unlimited number of bins. The CRIBWARE software provides the inventory control, issuing and returning management, and replenishment of the items in the multiple bins.
- **Restocking**  
Restocking of items is done under password control with easy to use prompts. Multiple vendor restocking can be done through the issuing/returning doors and will isolate vendors from other vendors material and information.
- **Item Selection**  
Items may be selected by three different methods, bar code scanning, keyboard typing or a drill down search.
- **Kit Management**  
All the items in a kit may be issued with one part number selection.
- **Drill-Down-Search**  
The Drill-Down-Search helps the operator find an item quickly and easily, if a part number is not known or a bar code is not available. This touch screen, search starts at a broad description and gives the operator more specific choices until an exact selection can be made.
- **Automatic Replenishment**  
The unit(s) may be replenished in various ways. Reorder reports and automatic purchase orders are some of the replenishment options. Automatic purchase orders may be printed, faxed, emailed or use EDI to complete the transmission.
- **Full Reporting Package**  
Over 350 standard reports are available to provide a full range of reporting options. A custom report writer that uses the Crystal Reports driver, is available for unique reporting requirements.
- **Network Reporting Station**  
An external reporting module is available for creating reports on computers connected to the TDS unit(s) by a local area network.



## TDS Specifications

### Physical Specifications

	Model 180	Model 720
Height	69"	69"
Width	30"	30"
Depth	44"	44"
Number of Storage Compartments	18 Minimum, 180 Maximum	72 Minimum, 720 Maximum
Minimum Compartment Size	4.75" x 5" x 1.8"	2" x 2" x 1.8"
Maximum Compartment Size	4.75' x 5" x 19"	2" x 2" x 19"

	Model 470	Model 1630W
Height	85"	85"
Width	30"	30"
Depth	52"	52"
Number of Storage Compartments	47 Minimum, 470 Maximum	163 Minimum, 1630 Maximum
Minimum Compartment Size	4.75" x 5" x 1.8"	2" x 2" x 1.8"
Maximum Compartment Size	4.75' x 5" x 19"	2" x 2" x 19"

### GENERAL SPECIFICATIONS



Maximum weight capacity:  
2000 lbs.

Electrical:  
115 VAC, 60 Hz, single phase

Interface:  
Ethernet compatible

Computer Control:  
Pentium-based computer, Windows operating system with color touch screen

Environmental:  
32° F to 120° F

Access Time:  
TDS 180/720 – 30 seconds maximum  
TDS 470/1630 – 60 seconds maximum

Expandability:  
Up to 10 additional storage cabinets on the same computer

Warranty:  
1 year on parts, and workmanship

#### Options:

- Magnetic Card Reader
- Local Area Network Interface
- Bar Code Input Card, Badge, or Wand

©2008 Applied CIM Technologies, Inc. All rights reserved. The information in this document is subject to change without notice. CRIBWARE is a registered trademark of Applied CIM Technologies, Inc. All other product and company names mentioned herein may be the trademarks of their respective owners.